

Reclaimed Transbay Terminal Douglas Fir



www.mbreclaimed.com



The Transbay Terminal was originally built in 1937 as the terminal for East Bay trains using the Bay Bridge. A steam powered pile driver was used to insert hundreds of these 40' Fir logs into the ground for the foundation.

Our Reclaimed Wood is **heat treated** and **metal free!**

Size: 1/4"-3/8" x 4" x 18"-60"

Edge Detail: Square edge

Covers: 30 sq. ft.

Certified: FSC® Recycled 100%

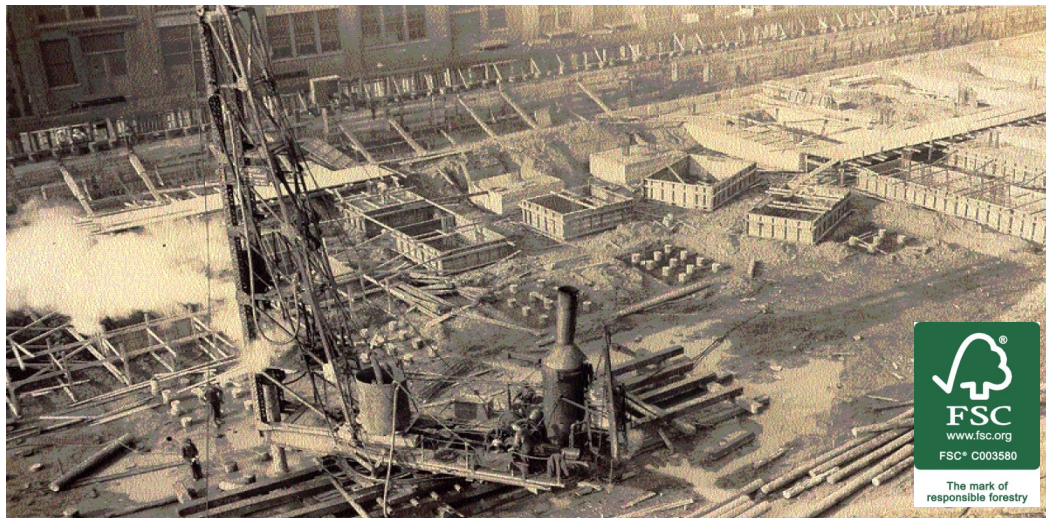
Character: Blonde natural color with some blue/green/grey color variation, checking, splits, and knots

Material #: TB-DF

Real wood. Real stories.

Leverage Mission Bell's expertise to recommend, source and give this Reclaimed Wood a second life.

408.778.2036
reclaimedwood@missionbell.com



© Copyright Mission Bell 2017