

# Transbay Terminal



[www.mbreclaimed.com](http://www.mbreclaimed.com)



## Reclaimed Douglas Fir

The Transbay Terminal was originally built in 1937 as the terminal for East Bay trains using the Bay Bridge. A steam powered pile driver was used to insert hundreds of these 40' Fir logs into the ground for the foundation.

**Source:** Transbay Terminal, San Francisco

**Prior Use:** Pilings for original Transbay Terminal Foundation

**Species:** Douglas Fir (*Pseudotsuga menziesii*)

**Certified:** FSC® Recycled 100%

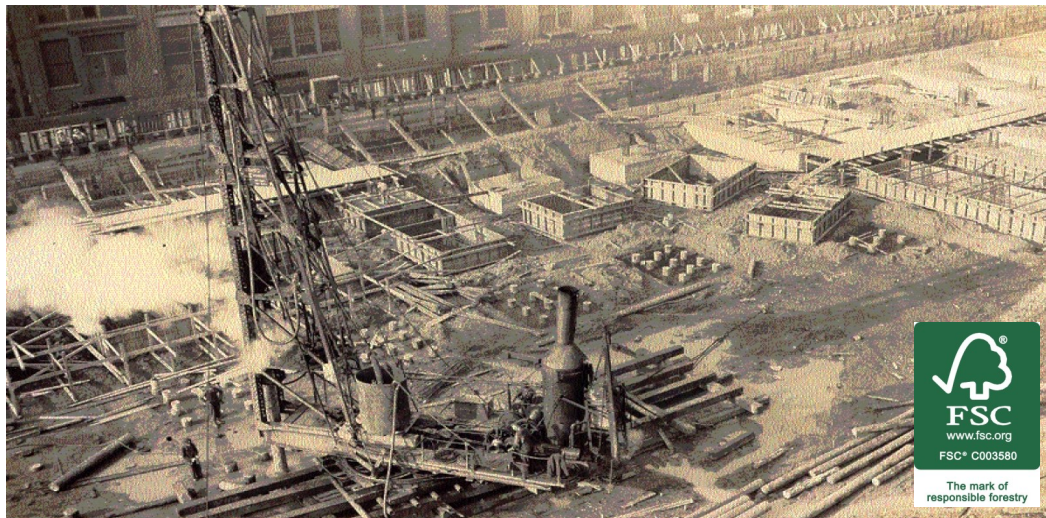
**Character:** Knots, natural Douglas Fir color, some blue/green/grey mineral coloration, and some checking, splits, and cracks

**Material #:** TB-DF

### Real wood. Real stories.

Leverage Mission Bell's expertise to recommend, source and give this Reclaimed Wood a second life.

408.778.2036  
[reclaimedwood@missionbell.com](mailto:reclaimedwood@missionbell.com)



© Copyright Mission Bell 2017