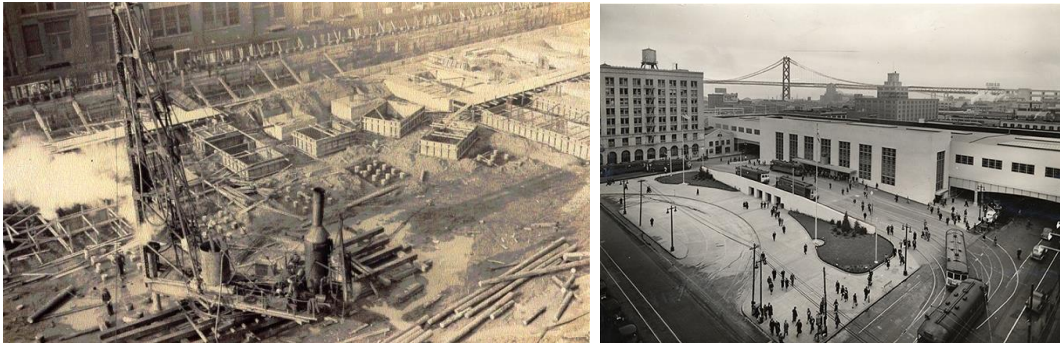




MissionBell

## The Story: Transbay Terminal Douglas Fir



San Francisco's Transbay Terminal was completed in 1939 at First and Mission Streets as the terminal for East Bay trains using the newly opened Bay Bridge. The Terminal was designed to handle as many as 35 million people annually, with ten car trains arriving every 63.5 seconds. In its heyday, the terminal's rail system served 26 million passengers annually. After the war ended and gas rationing was eliminated, the Terminal's use began to steadily decline to a rate of four to five million people traveling by rail per year. In 1958, the lower deck of the Bay Bridge was converted to automobile traffic only, the Key System was dismantled and by 1959 the inter-modal Transbay

Terminal was converted into a bus-only facility.

A completely new Transbay Terminal complex is currently underway, and the foundation pilings for the original Transbay Terminal have been removed. The foundation pilings consisted of 40' long

Douglas Fir logs driven into the ground by a steam powered pile driver. Mission Bell is pleased to be able to make this beautiful reclaimed Douglas Fir available for new projects. We have logs with weathered exterior and tight knots. Some logs have slight green/blue/grey mineral coloration. All are available from existing logs to fresh lumber.



FSC® Recycled 100%

Material #: TB-DF – Transbay Terminal Douglas Fir (*Pseudotsuga menaiesil*)